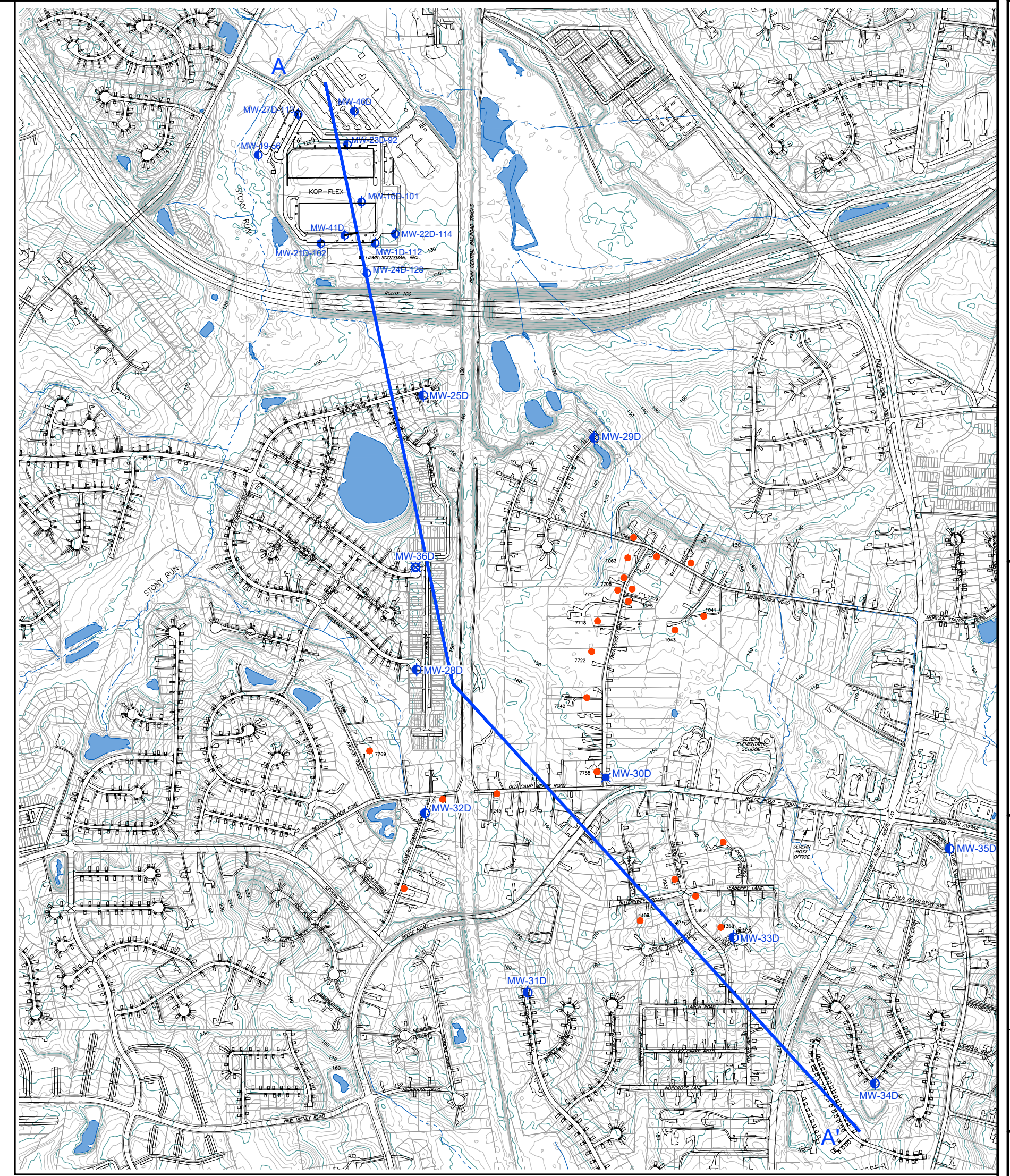


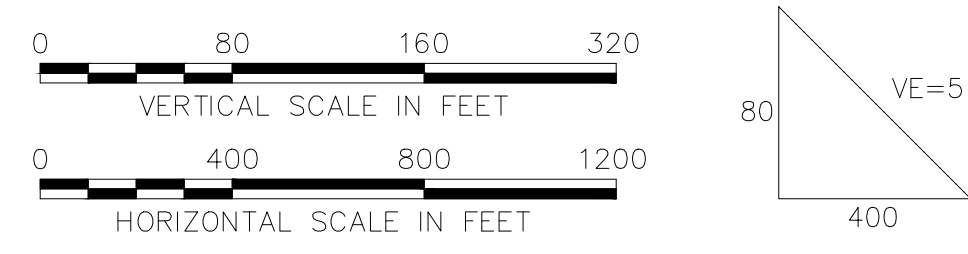
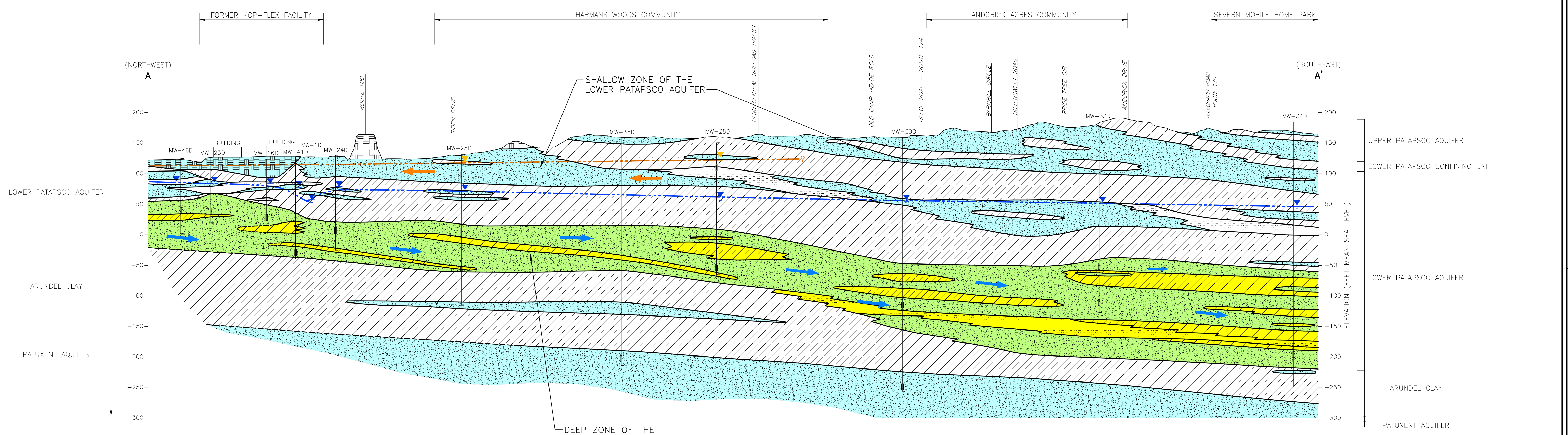
- LEGEND**
- PROPERTY LINE
 - STREAM
 - WATER BODY
 - CONFINED LOWER PATAPSCO AQUIFER MONITORING WELL
 - ✱ CONFINED LOWER PATAPSCO AQUIFER AND PATUXENT AQUIFER MONITORING WELL
 - ⊠ PATUXENT AQUIFER MONITORING WELL
 - FORMER OR EXISTING RESIDENTIAL WELL

- CROSS-SECTION LEGEND**
- SAND
 - INTERLAYERED SAND AND CLAY
 - CLAY
 - FILL MATERIAL
 - DEEP ZONE OF LOWER PATAPSCO AQUIFER
 - ▲ PIEZOMETRIC HEAD IN SHALLOW PORTION OF LOWER PATAPSCO AQUIFER (WATER LEVEL DATA RECORDED IN 4TH QUARTER 2018)
 - ▼ POTENTIOMETRIC HEAD IN DEEP/CONFINED PORTION OF LOWER PATAPSCO AQUIFER
 - BOREHOLE
 - SCREEN
 - DECOMMISSIONED WELL
 - END OF BOREHOLE
 - GROUNDWATER FLOW DIRECTION - DEEP/CONFINED ZONE OF LOWER PATAPSCO AQUIFER
 - POTENTIOMETRIC SURFACE - DEEP/CONFINED ZONE OF LOWER PATAPSCO AQUIFER
 - GROUNDWATER FLOW DIRECTION - SHALLOW/UNCONFINED ZONE OF LOWER PATAPSCO AQUIFER
 - GROUNDWATER SURFACE - SHALLOW/UNCONFINED ZONE OF LOWER PATAPSCO AQUIFER

NOTE:
EXISTING GRADE IS BASED ON SURFACE ELEVATION AT THE SECTION LINE.
NOT THE ELEVATION OF THE TOP OF THE MONITORING WELL OR BOREHOLE.



CROSS SECTION LOCATION MAP
SCALE: 1"=800'



REVISIONS	
REV	DESCRIPTION

DRAWN BY	CHECKED	ECC	APPROVED	DATE

HYDROGEOLOGIC CROSS-SECTION AND CONCEPTUALIZATION OF GROUNDWATER FLOW IN LOWER PATAPSCO AQUIFER FORMER KOP-FLEX FACILITY SITE HANOVER, MARYLAND

PREPARED FOR
EMERSUB 16 LLC
ST. LOUIS, MISSOURI

WSP USA Inc.
13530 DULLES TECHNOLOGY DR., SUITE 300
HERNDON, VA 20171
TEL: +1 703.709.6500

FIGURE 1
Drawing Number
Webphoto2

D

THE ORIGINAL VERSION OF THIS DRAWING IS IN COLOR. BLACK AND WHITE COPIES MAY NOT ACCURATELY DEPICT CERTAIN INFORMATION.

P:\PROJECTS\CAD\CADWORK\2018\1156\1156.dwg 3/7/2022 11:56 AM USER:DJT